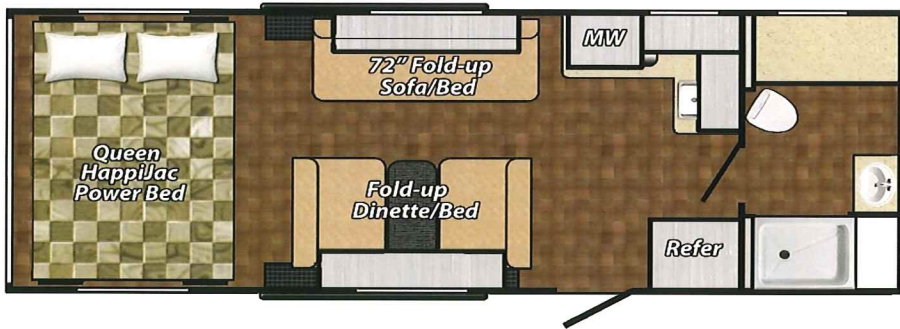


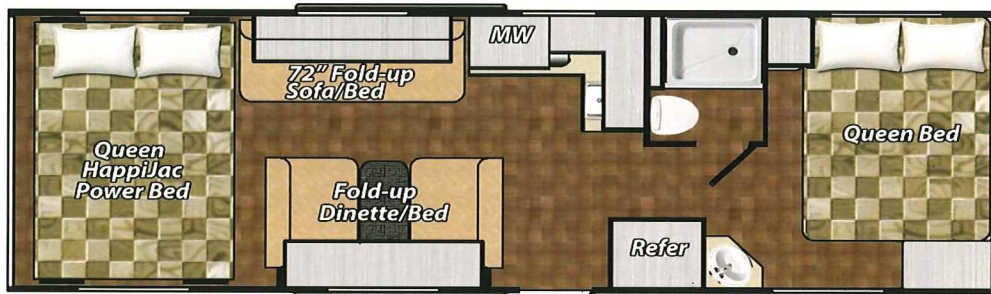
TOY HAULER FLOORPLANS



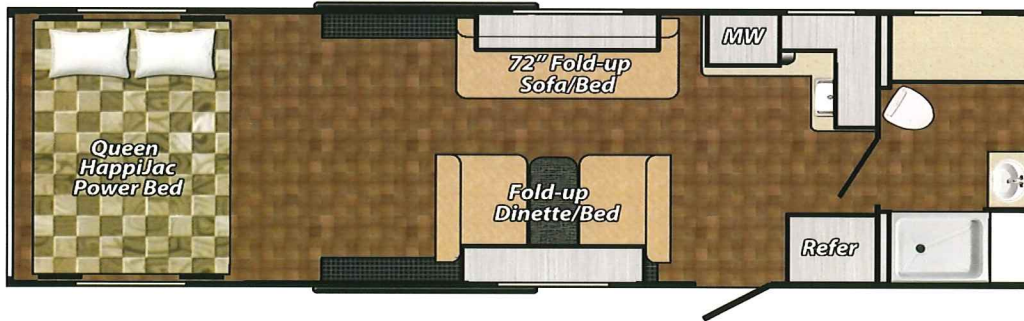
RECREATIONAL VEHICLES



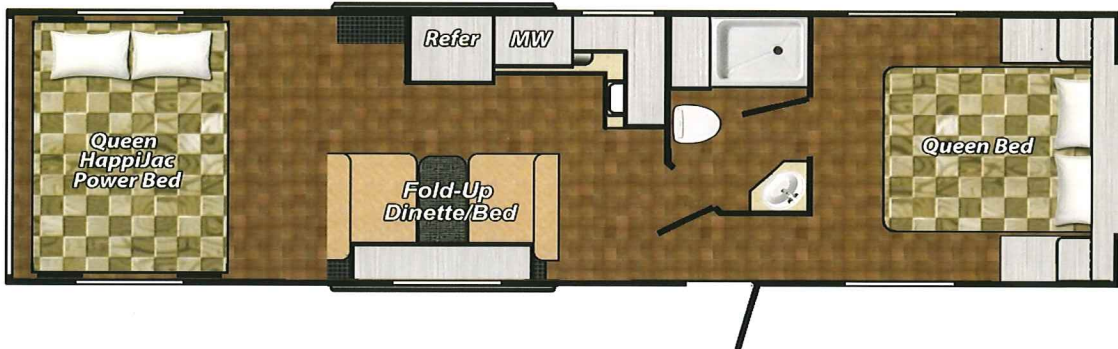
FTH24FBA



FTH26FBD



FTH28FBA



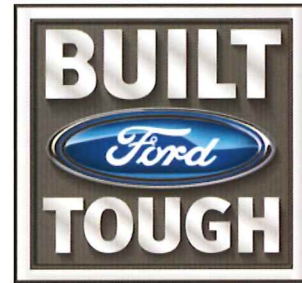
FTH30FBD



www.fordrvs.com

FORD TOY HAULERS

Ford designers worked hand and hand with those from Livin'Lite in order to imbue the Ford brand with Ford's design, incorporating strong, lightweight aluminum alloy in it's design.



Model	FTH24FBA	FTH28FBA	FTH26FBD	FTH30FBD
Box Length	24'	27'-10"	26'	29'-6"
Overall Length	28'-0"	31'-10"	30'-3"	34'-3"
Int. Width	96.5"	96.5"	96.5"	96.5"
Between WW	78.5"	78.5"	78.5"	78.5"
Rear Int Height	98"	98"	98"	98"
Height w/AC	11'-6"	11'-6"	11'-6"	11'-6"
Tire Size	15"	15"	15"	15"
GVWR	9714 lbs.	9722 lbs.	9730 lbs.	9890 lbs.
Dry Weight	*5996 lbs.	*6444 lbs.	*6140 lbs.	*6905 lbs.
Load Cap.	*3718 lbs.	*3278 lbs.	*3590 lbs.	*2985 lbs.
Hitch Weight	**914 lbs.	**922 lbs.	**930 lbs.	**1090 lbs.
Grey Water	28 gal.	28 gal.	28 gal.	28 gal.
Black Water	28 gal.	28 gal.	28 gal.	28 gal.
Fresh	63 gal.	63 gal.	63 gal.	63 gal.

Approximate Garage Dimensions

	FTH24FBA	FTH28FBA	FTH26FBD	FTH30FBD
To Refer	16'-6"	20'-4"	16'-1"	10'-8"
To Kitchen	14'-6"	18'-4"	12'-4"	16'

* Weights based upon standard equipment. Options will add weight. Be sure to check your tow vehicle manufacturer's published tow ratings and not exceed those ratings. Failure to do so may void your warranty on your tow vehicle and cause unsafe towing conditions .



** The axle location on the camper is designed so that the typical hitch weight is approx. 10-15% of the camper's dry weight. There will be variations in the hitch weights based on options and floorplans, but remember, you can always adjust your hitch weight by shifting your cargo load either behind or in front of the axle(s) in order to achieve the smoothest ride for your particular tow vehicle.